

An abstract artwork featuring a complex composition of layered, wavy, and zigzag patterns. The color palette is dominated by vibrant greens, deep reds, and earthy browns, with accents of grey and white. The patterns are dense and rhythmic, creating a sense of movement and depth. The overall style is reminiscent of mid-century modern graphic design or folk art.

CHRISTOPHER SCHADE

Christopher Schade

Envisaged Landscapes

September 29 - October 24, 2020

THE PAINTING CENTER

547 West 27th Street, Suite 500, New York, NY 10001
Tues-Sat, 11-6 pm, 212-343-1060, www.thepaintingcenter.org

Catalogue Design: Shazzi Thomas

Envisaged Landscapes

The Painting Center is pleased to present *Envisaged Landscapes*, an exhibition of recent work by Christopher Schade in the Project Room. In these paintings and drawings, Schade explores the nature of cognition and perception using the genre of landscape. Each image begins by finding certain spatial relationships through plein air painting and then disrupting these relationships by using color, paint application and pattern in a non-descriptive way to support some pictorial conventions and undermine others. By using echoes of the recognizable in the form of observed spaces and colors, Schade encourages a greater subliminal belief in the landscape, making his distortions more intimate. Fundamental to the work are questions of what and how we visually recognize and understand, and the experience of holding simultaneously contradictory beliefs.

Christopher Schade was born in Austin, TX and grew up in Austin and in Quirihue, Chile. He received his MFA in Painting and Printmaking from Yale University and attended the Skowhegan School of Painting and Sculpture. Schade's paintings have been recognized with awards from the New York Foundation for the Arts, BNY Mellon and the Dallas Museum of Art. His exhibitions include solo shows at Kai Matsumiya Gallery and the Boston Design Center and group exhibitions at The Painting Center, Park Place Gallery, Blackburn 20/20, Tiger Strikes Asteroid, Brian Morris Gallery, GRG gallery, Drive-By Projects, and Geoffrey Young Gallery. Schade's work has been written about in Boston Art Review, Interview Magazine, The Huffington Post, Hyperallergic, Dallas Art Revue, Austin American-Statesman and The Austin Chronicle. Christopher Schade currently lives and works in Watertown, Massachusetts and teaches painting and drawing as an Assistant Professor of Art at the University of Massachusetts Boston. For more information on the artist, please visit: christopherschade.com.

Arch
2012
Oil on panel
9 x 9 inches



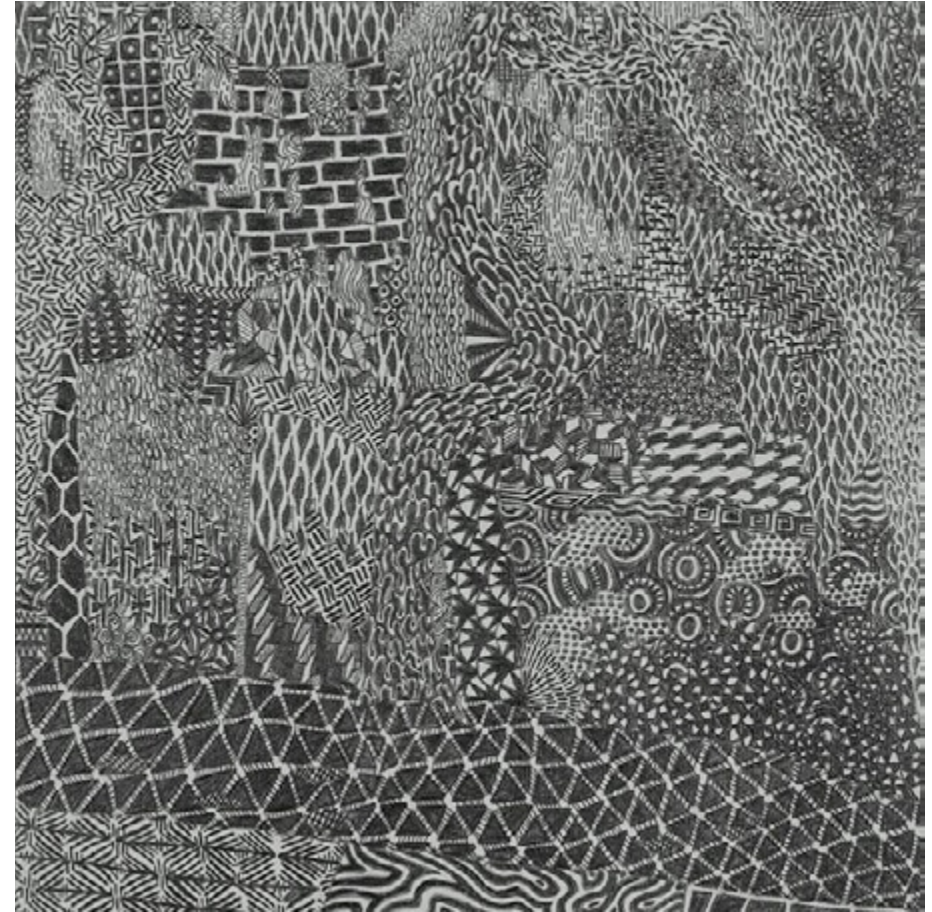
Arch 5
2013
Graphite on paper
7.5 x 7 inches



Arch 6
2013
Acrylic on paper
7 x 7.25 inches



Arch 9
2020
Graphite on paper
7 x 7 inches



Arch 7 (Ithaca / Watertown / Spring / Day)
2019
Oil on canvas
60 x 60 inches



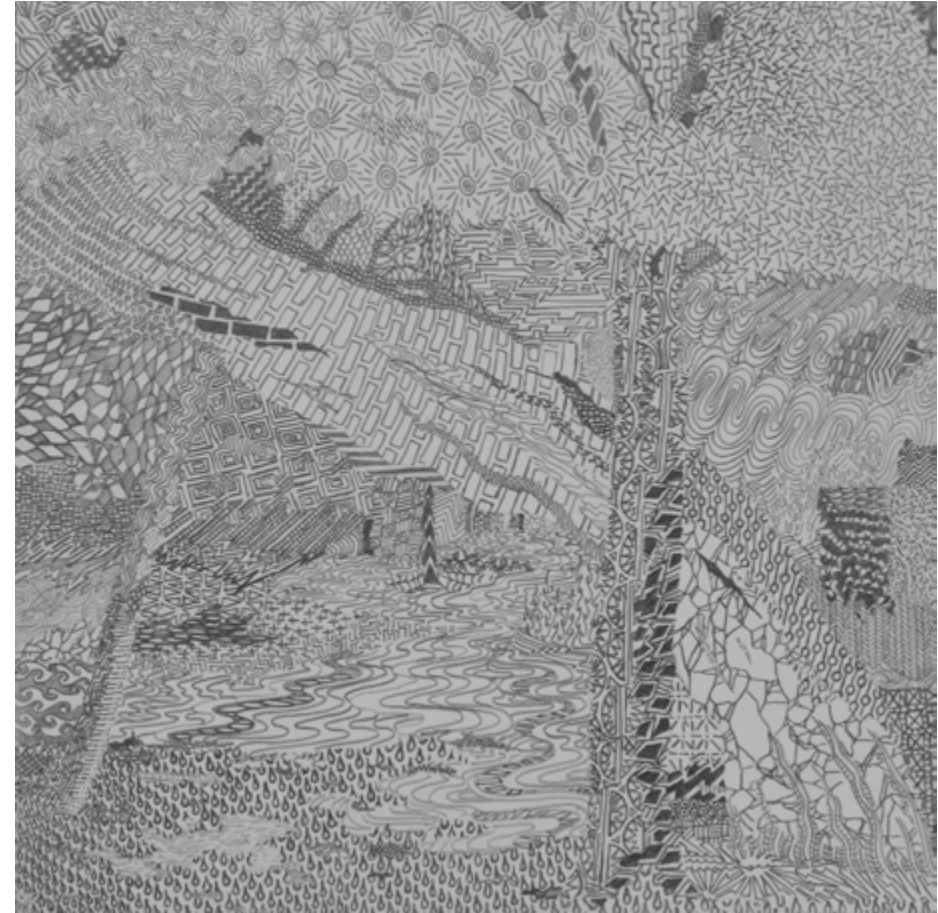
Arch 8 (Ithaca / Watertown / Winter / Night)
2020
Oil on canvas
60 x 60 inches



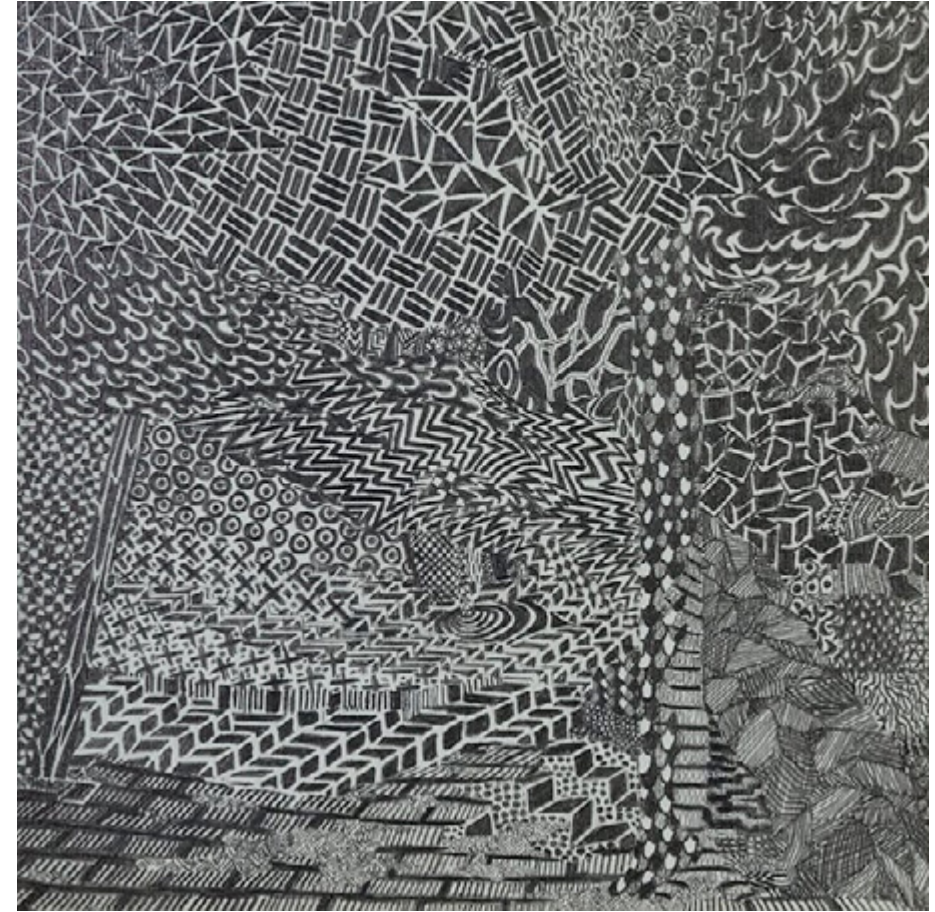
Archway
2014
Oil on linen
8 x 8 inches



Archway 5
2019
Graphite on paper
7 x 7 inches



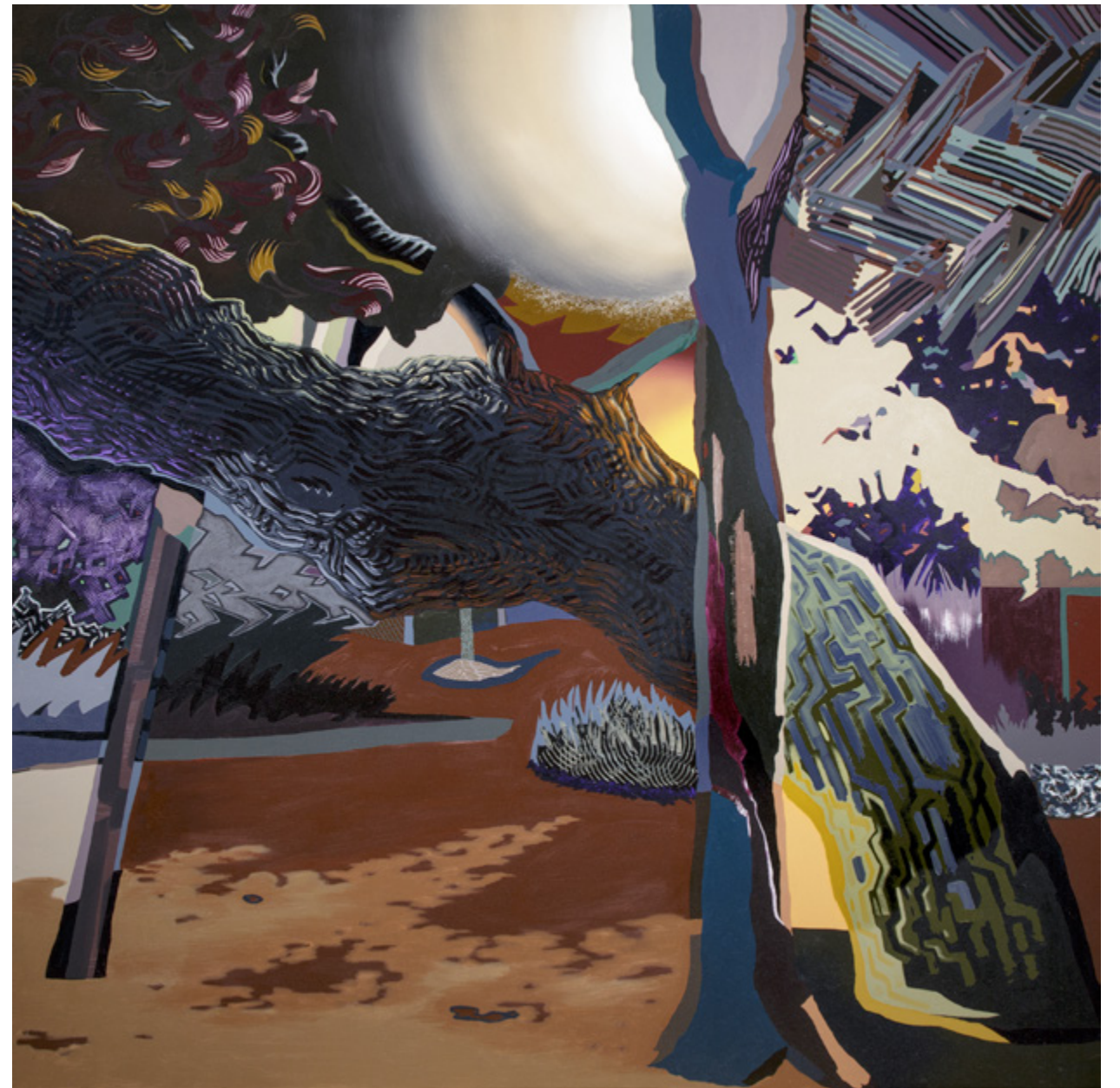
Archway 6
2020
Graphite on paper
7 x 7 inches



Archway 3 (Paris / New York / Spring / Day)
2015
Oil on canvas
60 x 60 inches



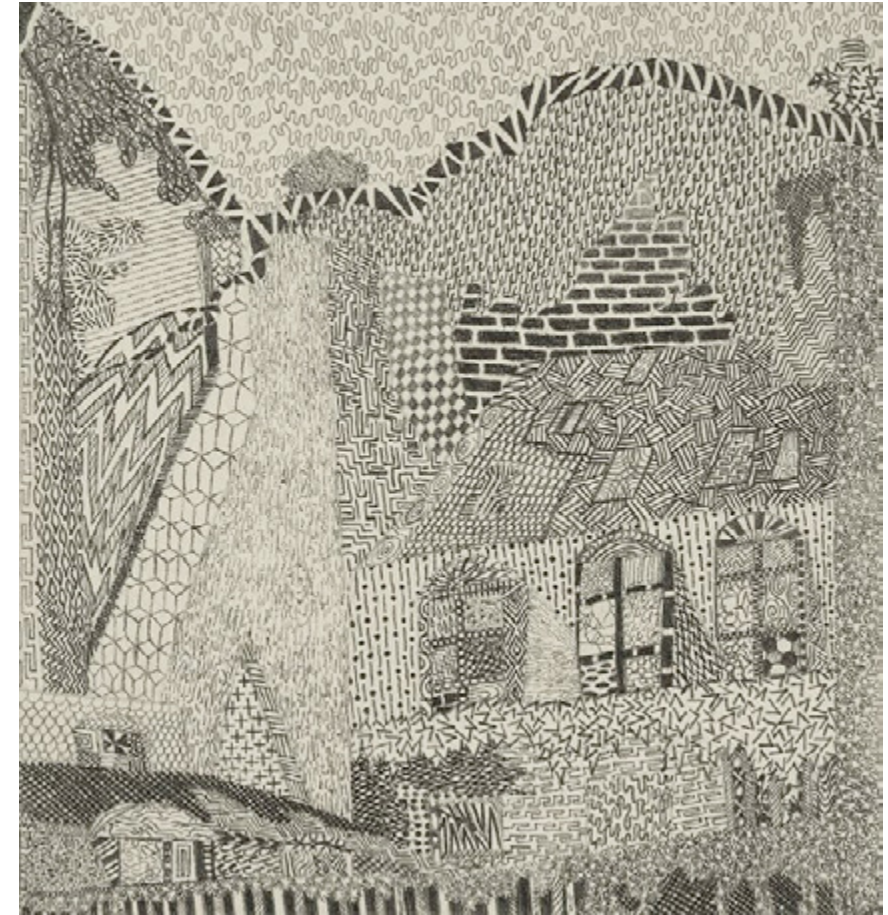
Archway 4 (Paris / New York / Spring / Night)
2017
Oil on canvas
60 x 60 inches



Juncture
2014
Oil on linen
8 x 8 inches



Junction 4
2015
Graphite on paper
7.25 x 7.25 inches



Opening
2014
Oil on linen
8 x 8 inches



Opening 5
2014
Graphite on paper
7.5 x 7 inches



