



t h e  
b l u e s

t h e  
b l u e s

January 28 - February 22, 2020

Curated by

Lisa Pressman & Kathy Cantwell

**THE PAINTING CENTER**

547 West 27th Street, Suite 500, New York, NY 10001  
Tues-Sat, 11-6 pm, 212-343-1060, [www.thepaintingcenter.org](http://www.thepaintingcenter.org)

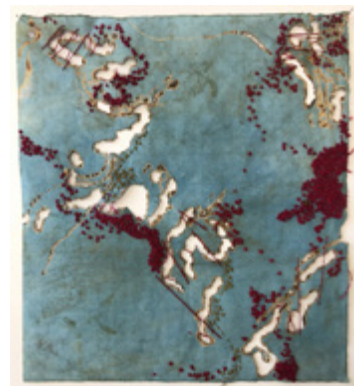
## The Blues

The Painting Center presents *The Blues*, an exhibition that explores the multifaceted color of “Blue”. The curators, Lisa Pressman and Kathy Cantwell, both colorists, have chosen work done in a variety of styles, media and approaches to try to capture the mystery in this color. Blue is a primary, not secondary, color and is the Pantone color of 2020. We are celebrating blue in all of its associations and complexities.

Blue is the only color that describes an emotional state as in melancholia or depression. We don't say we feel red or green. We can feel blue. It's a state of being. Conversely, it is known to calm the mind and body. The color blue can slow human metabolism and can produce a meditative effect. In nature, it is reflected in the sky, water, earth, and fire. It is associated with open spaces, intuition, imagination and inspiration. The Blues describes music, such as rhythm and blues, bluegrass and jazz. It is also associated with ideology like the democrats and blue states. “Blue has no dimension, it is beyond dimensions.”

- Yves Klein

*The Blues* artists are Christine Aaron, Dan Addington, Noa Bornstein, Linda Bradford, Rini Brakkee, Mona Brody, Holly Brown & Juan Manuel Gomez, Laura Charlton, David A. Clark, Kate Collyer, Valerie Corvin, Gary Crowder, Stephanie Dalton, Beth Dary, Mary DeVincentis, Mollie Douthit, Jennifer Drewitt, Patricia Fabricant, Camilla Fallon, Margaret Fitzgerald, Lisa Frank, Milisa Galazzi, Robert Gamblin, Cora Jane Glasser, Diana Gonzalez Gandolfi, Elizabeth Gourlay, Bruce Halpin, Fukuko Harris, Jeanne Heifetz, Howard Hersh, Jeffrey Hirst, Joanne Holtje, Amanda Jolley, Claudia Keep, Joanna Kidney, Dana Killion, Joyce Korotkin, Judith Kruger, Lisa Lackey, Melissa Lackman, Mark LaRiviere, Susan Lasch Krevitt, Stacey Lawrence, Bonny Leibowitz, Laura Lou Levy, Donald Martiny, George McKim, Joe Morzuch, Nancy Natale, Jenny Nelson, Karen Nielsen-Fried, Brooke Nixon, Sean Noonan, Marie Riccio, Nancy Gail Ring, Marybeth Rothman, Nancy Rubens, Andra Samelson, Denise Sfraga, Anna Shukeylo, Julie Snidle, Susan Stover, Susan Taverna, Elise Wagner, Michael Wagner, Elizabeth Carol Winchester, Caroline Young and Tamar Zinn.



**Christine Aaron**

*Confluence III*, 2018, Burnt drawing on indigo dyed kozo paper with hand stitching, 14.75" x 13.75"



**Rini Brakkee**

*The Planet Blues 2*, 2019, Oil on panel, 5.2" x 7.1"



**Dan Addington**

*Saint Maybe*, 2019, Oil, graphite, and plaster ground on found book, 9" x 6"



**Mona Brody**

*Inform Our Ignorance*, 2019, Oil, shellac, wax on linen, 30" x 24"



**Noa Bornstein**

*Doctor Enker*, 2010, Wire, sisal, plaster, pipe, wood, paint, 30" x 20.5" x 24"



**Holly Brown and Juan Manuel Gomez**

*Looking Up*, 2018, Collagraph print and painting on white denim, 16" x 18"



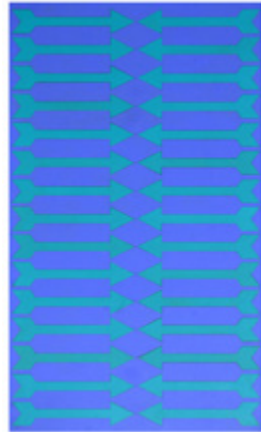
**Linda Bradford**

*Portal Lores*, 2014, Oil on silkscreened paper, 9" x 12"



**Laura Charlton**

*Blue Improvisation*, 2018, Acrylic on paper, 30" x 22"



**David A. Clark**

*Study for Reframing My Blues*, 2019, Pigment stick on laser cut draft board, 18.125" x 10.75"



**Stephanie Dalton**

*Lapis*, 2018, Mixed media, cloth, encaustic, 12" x 12"



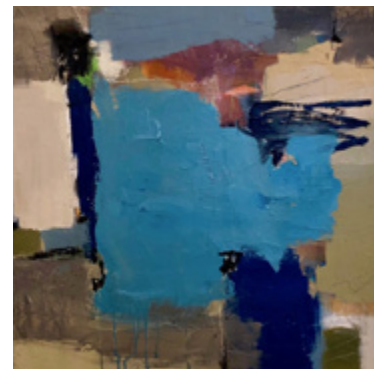
**Kate Collyer**

*Ice Field*, 2018, Encaustic, 24" x 24" x 6"



**Beth Dary**

*Crue 2*, 2016-18, Egg tempera, raw pigment, encaustic on panel, 5" x 7"



**Valerie Corvin**

*Dolomite Formation*, 2019, Mixed media on canvas, 18" x 18"



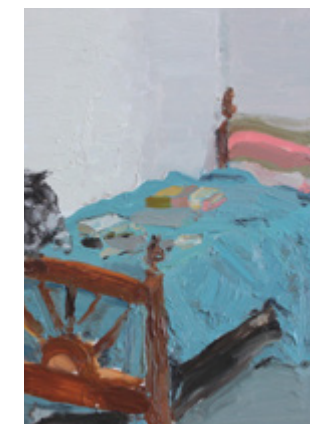
**Mary DeVincentis**

*Blue*, 2019, Acryla gouache on panel, 8" x 10"



**Gary Crowder**

*The Assertion of Slowness*, 2019, Oil on board, 10" x 11"



**Mollie Douthit**

*Dairy Queen in the Back of a Buick*, 2019, Oil on linen panel, 7" x 5"





**Jennifer Drewitt**

*Water Glass*, 2019, Oil on paper on panel, 6.5" x 5"



**Lisa Frank**

*I Always Want More*, 2019, Oil on panel, 10" x 10"



**Patricia Fabricant**

*Untitled 021813*, 2013, Gouache on paper, 12" x 9"



**Milisa Galazzi**

*Portal*, 2019, Encaustic on birch, 12" x 6" x 1"



**Camilla Fallon**

*Crane*, 2019, Oil on canvas, 30" x 30"



**Robert Gamblin**

*L'Ombre Bleue à la Ferme du Parc*, 2005, Oil on canvas on panel, 12" x 16"



**Margaret Fitzgerald**

*Oscuridad*, 2019, Oil and oil stick on board, 32" x 25"



**Cora Jane Glasser**

*Vault Light #2*, 2016, Oil and acrylic on UV facade tyvek on sintra, 10" x 0.375"



**Diana González Gandolfi**

*Only a Shadow Remained*, 2019, Monotype with graphite and wax additions on panel, 14" x 14" x 1.625



**Jeanne Heifetz**

*Mottainai*, 2016, Ink on gampi torinoko paper hand-dyed with indigo, 15" x 11"



**Elizabeth Gourlay**

*B Blue*, 2018, Colored pencil and gouache on paper, 10" x 11"



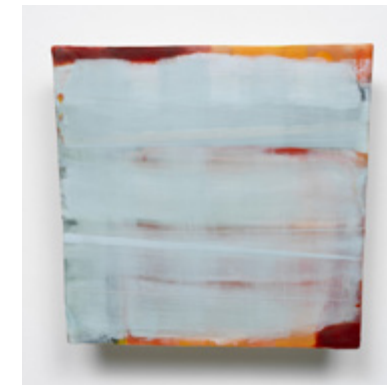
**Howard Hersh**

*Component - 17 - 5*, 2017, Acrylic on wood, 30" x 30" x 3"



**Bruce Halpin**

*Ghost*, 2017, Acrylic on wood, 12" x 16"



**Jeffrey Hirst**

*Structure and Form*, 2019, Encaustic and oil on shaped panel, 12" x 12"



**Fukuko Harris**

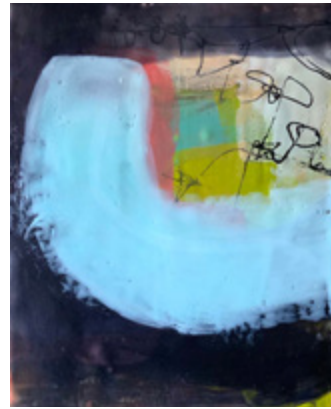
*Blue Face*, 2019, Clay, wire, beads, string, acrylic, 16" x 9.5" x 3.5"



**Joanne Holtje**

*Bundle No. 3*, 2019, Oil on canvas with staples and latigo, 9.5" x 8.5" x 2.5"





**Amanda Jolley**

*Lost History*, 2019, Encaustic, 8" x 10"



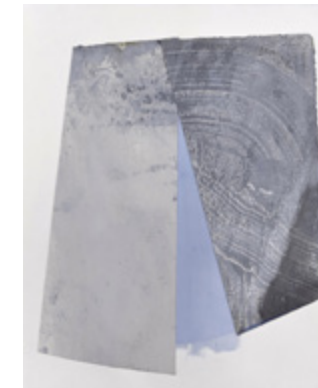
**Joyce Korotkin**

*Other Peoples Lives #11*, 2019, Oil on canvas, 16" x 20"



**Claudia Keep**

*Fan*, 2019, Oil on masonite, 12" x 16"



**Judith Kruger**

*Terrain Study 26*, 2019, Mineral pigments, sumi on mixed paper, 20" x 16"



**Joanna Kidney**

*Link 1*, 2019, Encaustic on panel, 8" x 8"



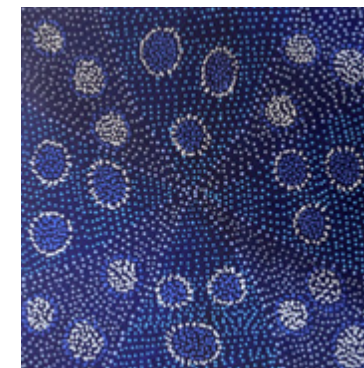
**Lisa Lackey**

*1224 Saint Nicholas Avenue*, 2019, Fabric and thread on canvas, 18" x 18"



**Dana Killion**

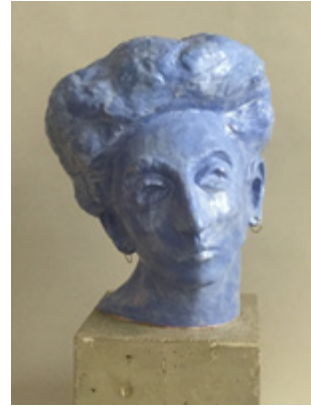
*Dig Deep*, 2019, Acrylic and graphite on paper, 36" x 28"



**Melissa Lackman**

*Singing the Blues 4*, 2019, Encaustic, 12" x 12"





**Mark LaRiviere**

*Blue Head*, 2019, Glazed ceramic and metal, 10" x 9" x 9.5"



**Laura Lou Levy**

*River, Sea*, 2019, Oil pastel on paper, 7" x 9"



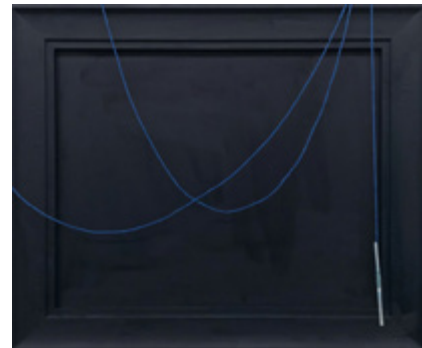
**Susan Lasch Krevitt**

*Wrapped/Rapt*, 2019, Textiles and encaustic, 19" x 19" x 9"



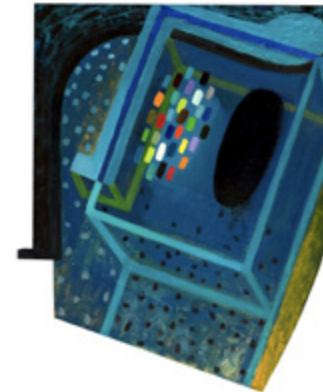
**Laura Lou Levy**

*River, Sea*, 2019, Oil pastel on paper, 7" x 9"



**Stacey Lawrence**

*The Dilemma of Self Navigating*, 2019, Mixed media, 25" x 21"



**George McKim**

*The Poet, Reclining*, 2019, Oil on shaped canvas and wood, 24" x 28"



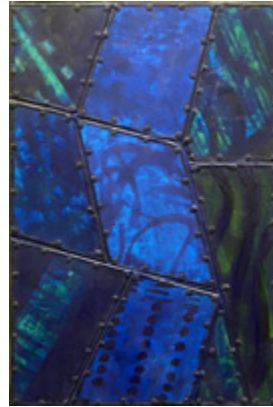
**Bonny Leibowitz**

*Unraveling the Garden with Bosch at Night*, 2019, Vinyl, acrylic, powdered pigment, inkjet, thread, 36" x 20" x 4"



**Joe Morzuch**

*Blue Tin*, 2019, Oil on canvas on panel, 17" x 17"



**Nancy Natale**

*Legs*, 2014-19, Oil and wax over encaustic and collage, 18" x 12"



**Sean Noonan**

*Just Enough to Hold It*, 2019, Oil and collaged paper, 17" x 22"



**Jenny Nelson**

*All in Blue 1*, 2019, Oil on canvas, 16" x 16"



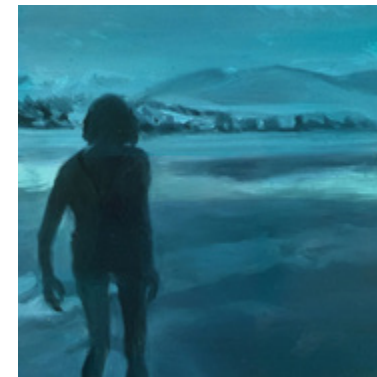
**Marie Riccio**

*Blue Tape Holding Me Down*, 2019, Oil on wood, 10" x 10"



**Karen Nielsen-Fried**

*Calm on the Surface*, 2019, Acrylic, flashe on wood, 20" x 20"



**Nancy Gail Ring**

*Amnion Diver*, 2016, Oil glazes on panel, 4" x 4"



**Brooke Nixon**

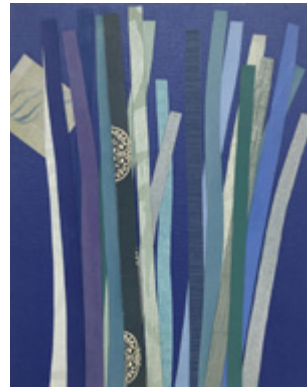
*November Gem*, 2019, Acrylic on wood panel, 12" x 12"



**Marybeth Rothman**

*Ernesto Centanos Nephew*, 2019, Photographic combine archival pigment print,, 28" x 27" x 1"





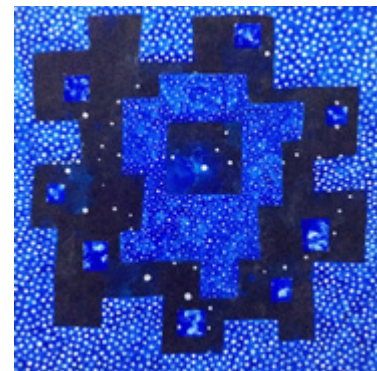
**Nancy Rubens**

*Evening Quiet*, 2019, Acrylic and glued papers on canvas, 14" x 11"



**Julie Snidle**

*Ice Cave*, 2019, Oil and wax, 20" x 16"



**Andra Samelson**

*Stellar Floor Plan*, 2019, Acrylic on canvas, 24" x 24"



**Susan Stover**

*Blue Diamonds*, 2017, Encaustic, 12" x 12"



**Denise Sfraga**

*Whisper*, 2019, Flashe on paper, 30" x 22"



**Susan Taverna**

*Synchronized Swimmers*, 2019, Oil on linen, 5" x 7"



**Anna Shukeylo**

*Hudson Heights (Figment 16)*, 2018, Acrylic on paper, 7.5" x 11"



**Elise Wagner**

*Glacier Chart 4*, 2017, Graphite, encaustic, oil on panel, 10" x 7.5"





**Michael Wagner**

*Satchmo Blues*, 2019, Acrylic on canvas, 20" x 20"



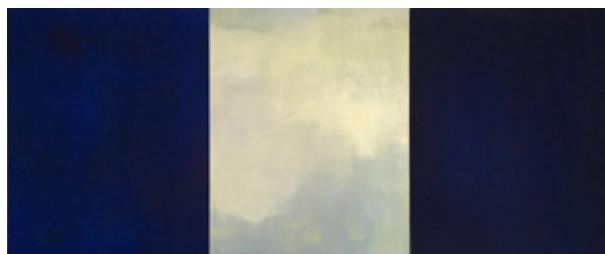
**Elizabeth Carol Winchester**

*Blue Beast*, 2019, Steel, grass, feathers, rope, wire, spraypaint, 36" x 15" x 20"



**Caroline Young**

*We Are Water After All*, 2019, Oil and cold wax on panel, 18" x 18"



**Tamar Zinn**

*Untitled Triptych*, 2019, Oil on panel, 14" x 33"

